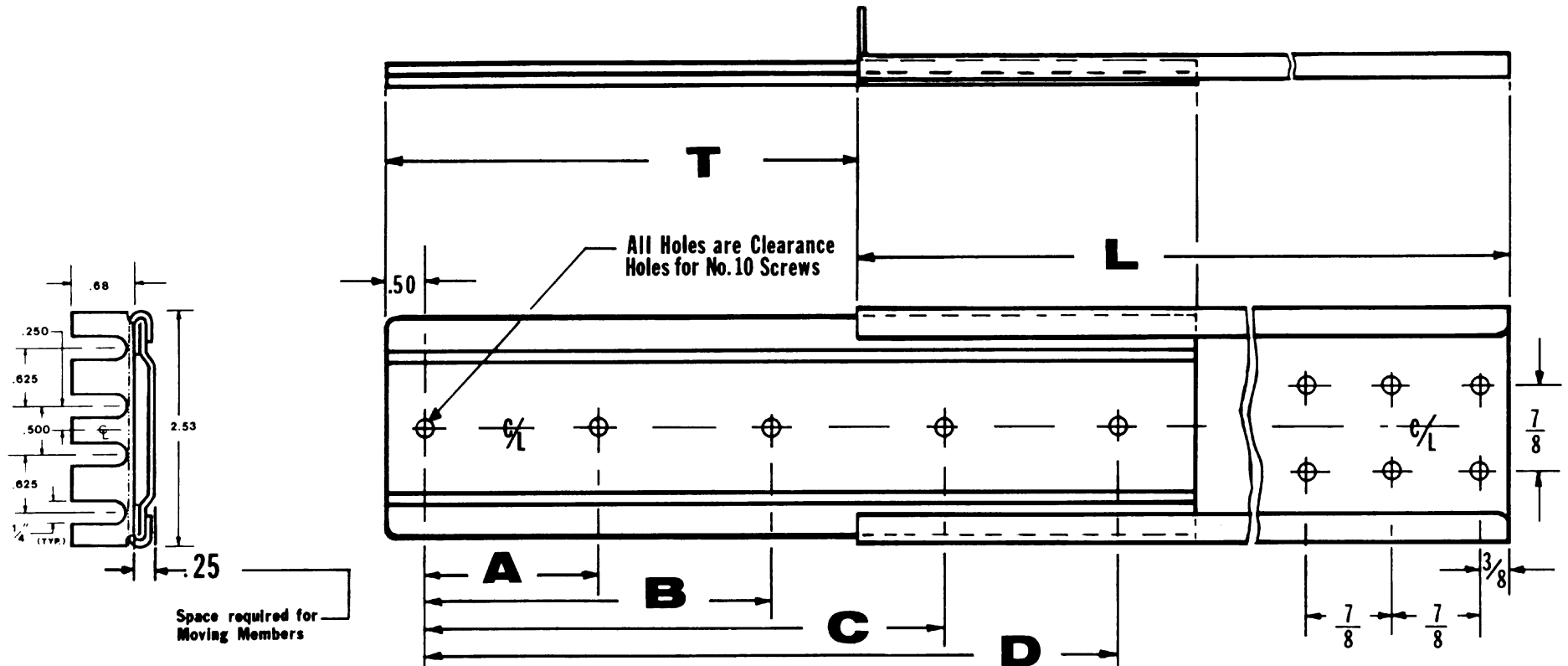


# Slim-Track 2-Section Solid Bearing Slides MODEL: ST2



**NOTES**

Solid Bearing. Superior Performance against High Shock and Vibration. Built-in Permanent Dry Lubrication. Never needs Oiling.

WHEN Ordering, Specify as: (example) ST2-20-PL,

(Positive Locking when extended) or ST2-20-SO (Stop-Out Only) For Fast Disconnect. Specify as FD.

ALL HARDWARE Stainless Steel or Zinc Plated.  
FINISH Molybdenum Disulfide Dry Lubricant, baked on at 400° per Mil-L-25504, over Phosphate Coating per Mil-P-16232, Type M.

MATERIAL Prime, hard Cold Rolled Steel. All parts built to Military Specifications.

\*LOAD CAPACITY Up to 100 Pounds in Extended Position  
SLIDES Shipped with Standard Rear Mounting Bracket (2")  
If Specified, any one of the following Size Rear Mounting Brackets will be shipped with Slides: 4"-6"-8"-10"-12"  
• Load Ratings are based on a pair of 18" Slides with Standard Extension

MODEL NO.	L	T	A	B	C	D
ST2 -10	10	7	4.25	8.50		
ST2 -12	12	9	5.25	10.50		
ST2 -14	14	11	6.25	12.50		
ST2 -16	16	12	4.83	9.66	14.50	
ST2 -18	18	13	5.50	11.00	16.50	
ST2 -20	20	15	4.62	9.25	13.87	18.50
ST2 -22	22	16	5.12	10.25	14.37	20.50
ST2 -24	24	17	5.62	11.25	15.37	22.50
ST2 -26	26	19	6.12	12.25	17.37	24.50
ST2 -28	28	20	6.62	13.25	19.37	26.50
ST2 -30	30	22	7.12	14.25	20.37	28.50

Choice of Positive Locking in both directions in extended position or Stop-Out Only (Stops coming OUT, but Can be pushed back into Cabinet without releasing any Catches), enabling easy entry of Chassis into Cabinet without manipulation of Catches.

BARNES ENGINEERING COMPANY  
2715 DELTA PLACE  
COLORADO SPRINGS, CO 80910  
TELEPHONE: (719) 390-6500  
FAX: (719) 390-6700  
TOLL FREE: (800) 995-6050  
www.slimtrack.com