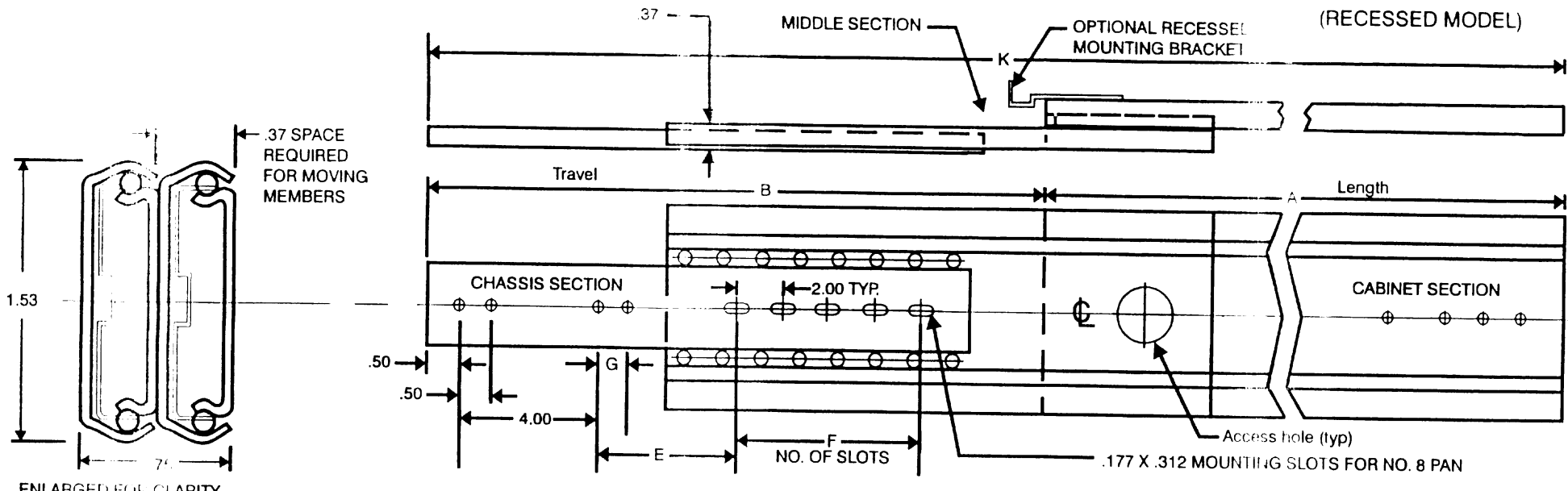
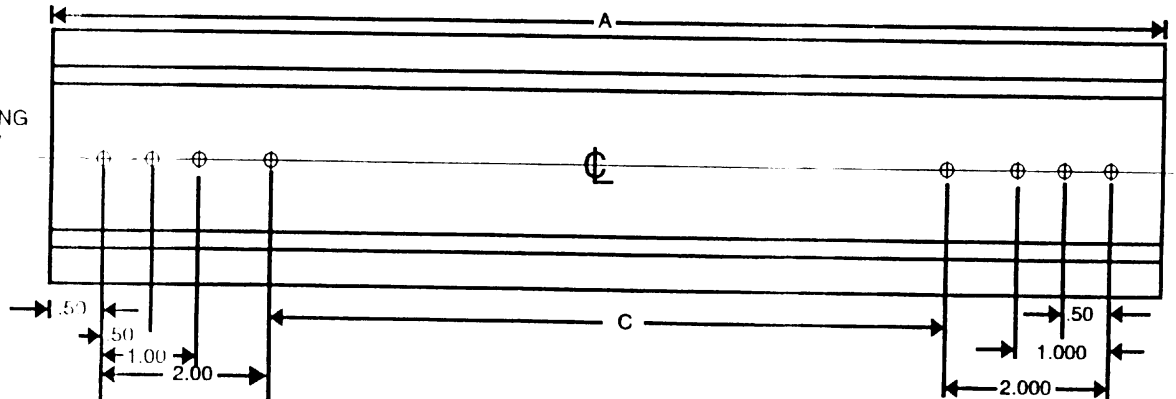


# "SLIDE-TRACK" 3-SECTION BALL BEARING SLIDE MODEL: RFBB



OUTER (CABINET SECTION) MOUNTING DETAILS SHOWN HERE FOR CLARITY



**NOTES:**

**MATERIAL:** PRIME WORK HARDENED STEEL.  
**FINISH:** BRIGHT ELECTRO-ZINC PLATED PER QQZ-325, TYPE 1, SILVER COLOR.  
 FRONT AND REAR MOUNTING BRACKETS ARE AVAILABLE.  
 ALL MOUNTING HOLES .177 DIA. FOR NO. 8 PAN OR BINDING HEAD SCREWS.  
 MOUNTING HOLE AND SLOT LOCATION TOLERANCE ± .015.  
 LOAD CAPACITY TO 100 LBS.\*

\*Load ratings are based on a pair of 18" slides with standard extension.

Any choice of combinations of lengths, engagements, mounting hole patterns, etc. available as a Barnes Engineering Company service at a nominal cost, or in any cases at no additional cost.

CHOICE OF POSITIVE LOCKING IN BOTH DIRECTIONS IN EXTENDED POSITION OR STOP-OUT ONLY WHICH ENABES EASY ENTRY OF CHASSIS INTO CABINET WITHOUT MANIPULATION OF CATCHES.

When ordering, please specify features needed:  
 RFBB-10 POSITIVE LOCKING WHEN EXTENDED;  
 RFBB-11 STOP-OUT ONLY;  
 RFBB-12 (PRIMARY MODELS);  
 RFBB-13 (FAST-DISCONNECT)

SLIDE DIMENSIONS							
MODEL	A	B	C	E	F	G	K
RFBB-10	10	11	5	4.50	1		21
RFBB-12	12	13	7	6.50	1		25
RFBB-14	14	15	9	6.50	2		29
RFBB-16	16	17	11	8.50	2		33
RFBB-18	18	19	13	8.50	3		37
RFBB-20	20	21	15	10.50	3	2	41
RFBB-22	22	23	17	10.50	4	2	45
RFBB-24	24	25	19	12.50	4	2	49
RFBB-26	26	27	21	12.50	5	2	53
RFBB-28	28	29	23	14.50	5	2	57
RFBB-30	30	31	25	16.50	5	2	61

**BARNES ENGINEERING COMPANY**  
 2715 DELTA PLACE  
 COLORADO SPRINGS, CO 80910  
 TELEPHONE: (719) 390-6500  
 FAX: (719) 390-6700  
 TOLL FREE: (800) 995-6050