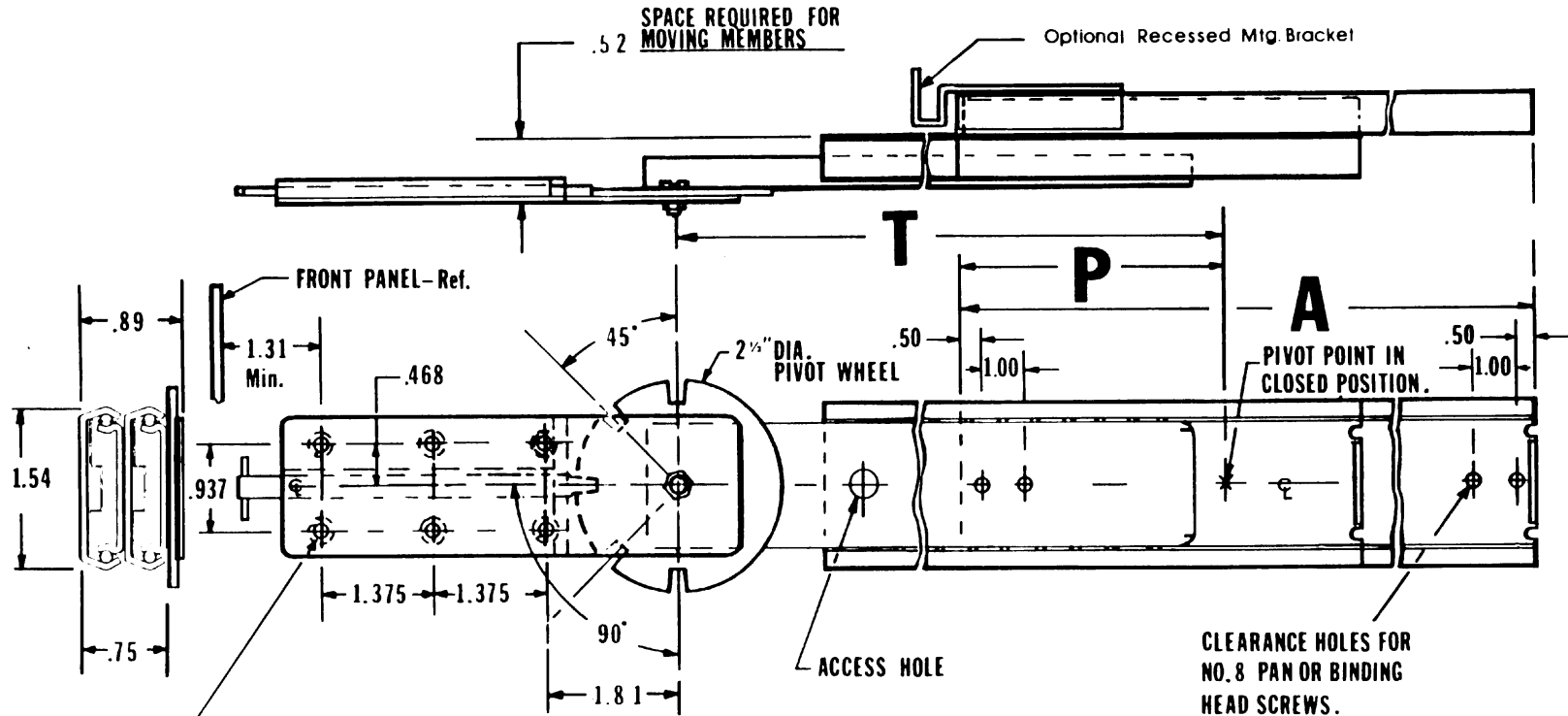


**SLIM-TRACK · 3 SECTION**  
**BALL BEARING STEEL**  
**CHASSIS SLIDES**

**Model: RFBB-RT**



CLEARANCE HOLES FOR NO. 8-32 FLAT. HEAD SCREWS (C'SUNK 100) - OPPOSITE SIDE.

MODEL NO.	A	T	P
RFBB-RT 10	10	11	5.50
RFBB-RT 12	12	13	5.50
RFBB-RT 14	14	15	6.50
RFBB-RT 16	16	17	7.50
RFBB-RT 18	18	19	8.50
RFBB-RT 20	20	21	9.50
RFBB-RT 22	22	23	10.50
RFBB-RT 24	24	25	11.50
RFBB-RT 26	26	27	12.50
RFBB-RT 28	28	29	13.50
RFBB-RT 30	30	31	14.50

**NOTES:**

1. Material: Prime work hardened cold rolled Steel.
2. Finish: Bright Electro-Zinc Plated per QQZ - 325, Type 1, Silver Color.
3. Load Capacity: 100 Pounds.
4. Front and Rear Mtg. Brackets available.
5. Military Models available; specify as: RFBB-RTM.
6. For Fast Disconnect specify as: -FD.
7. When Ordering specify as: RFBB-RT-20-PL (positive locking when extended).

- or RFBB-RT-20-SO (stop out only)

\* Load Ratings based on a pair of 18" Slides with Standard Extension

Choice of Positive Locking in both directions in extended position or Stop-Out Only (Stops coming OUT, but Can be pushed back into Cabinet without releasing any Catches), enabling easy entry of Chassis into Cabinet without manipulation of Catches.

**BARNES ENGINEERING COMPANY**  
 2715 DELTA PLACE  
 COLORADO SPRINGS CO 80910  
 719-390-6500 1-800-995-6050  
 WWW.SLIMTRACK.COM