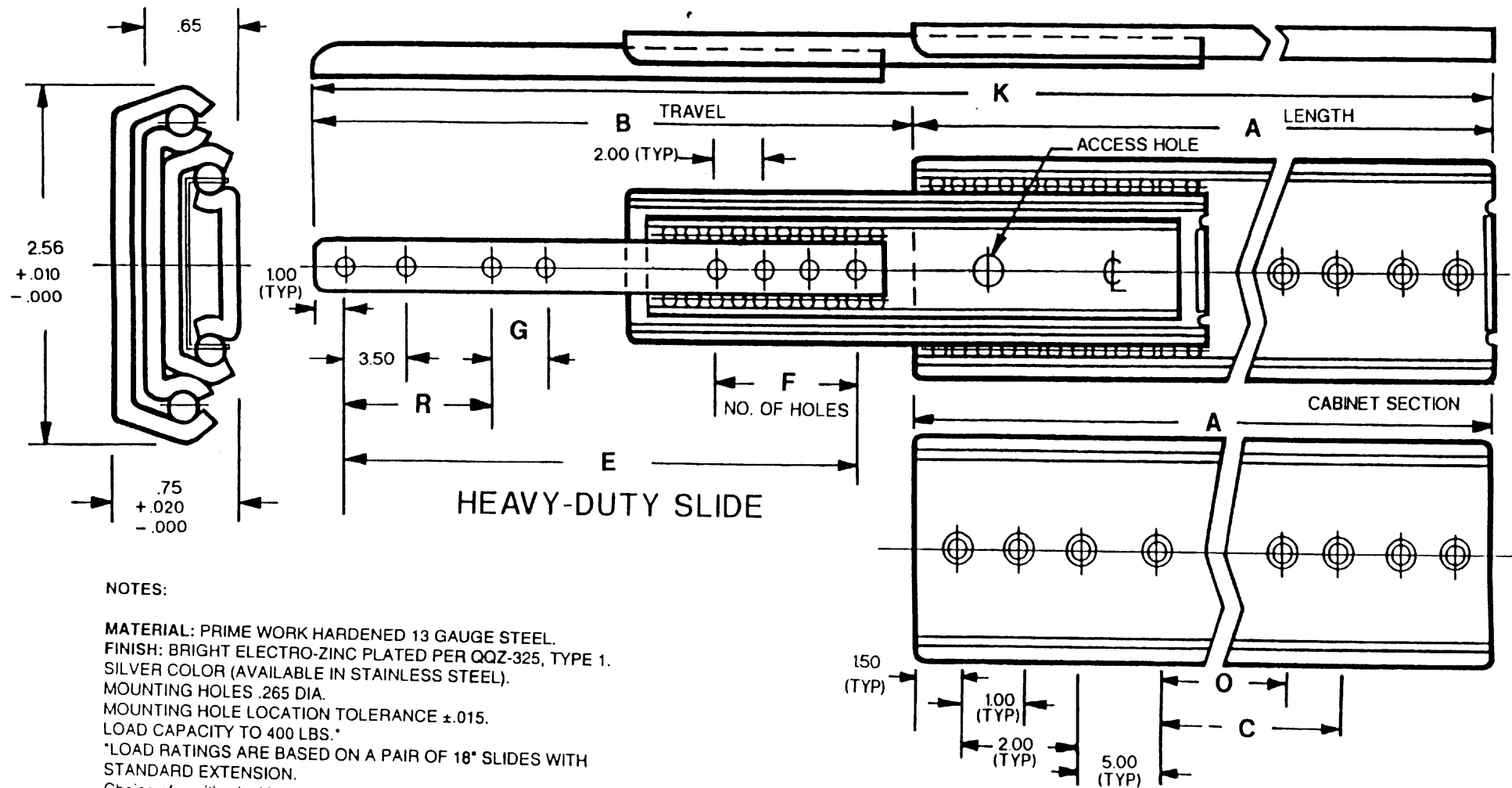


"SLIM-TRACK" 3-SECTION BALL-BEARING SLIDE MODEL: HDESBB

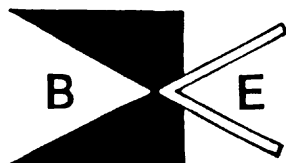


NOTES:

MATERIAL: PRIME WORK HARDENED 13 GAUGE STEEL.
FINISH: BRIGHT ELECTRO-ZINC PLATED PER QQZ-325, TYPE 1.
 SILVER COLOR (AVAILABLE IN STAINLESS STEEL).
 MOUNTING HOLES .265 DIA.
 MOUNTING HOLE LOCATION TOLERANCE $\pm .015$.
 LOAD CAPACITY TO 400 LBS.*
 *LOAD RATINGS ARE BASED ON A PAIR OF 18" SLIDES WITH STANDARD EXTENSION.
 Choice of positive locking in closed position or stop-out which enables easy entry of chassis into cabinet without manipulation of catches.
 Choice of combinations of lengths, engagements, mounting hole patterns, etc., available at Barnes Engineering Company, service at a nominal cost, or, in many cases at no additional cost.
 Additional holes available at Barnes Engineering Company's option.
 Front and rear mounting brackets are available

SLIDE DIMENSIONS									
MODEL	A	B	C	E	F	G	K	O	R
HDESBB-10	10	11	3	8	1		21		
HDESBB-12	12	13	5	10	1		25		
HDESBB-14	14	15	7	12	2		29		
HDESBB-16	16	17	9	14	2		33		
HDESBB-18	18	19	11	16	3		37		
HDESBB-20	20	21	13	18	3		41	3	5.5
HDESBB-22	22	23	15	20	4		45	5	5.5
HDESBB-24	24	25	17	22	4		49	7	5.5
HDESBB-26	26	27	19	24	2		53	9	5.5
HDESBB-28	28	29	21	26	5		57	11	5.5
HDESBB-30	30	31	23	28	5		61	13	5.5

*OPTIONAL HOLE UPON REQUEST



BARNES ENGINEERING COMPANY
 2715 DELTA PLACE
 COLORADO SPRINGS, CO 80910
 TELEPHONE (719) 390-6500
 FAX (719) 390-6700
 www.slimtrack.com