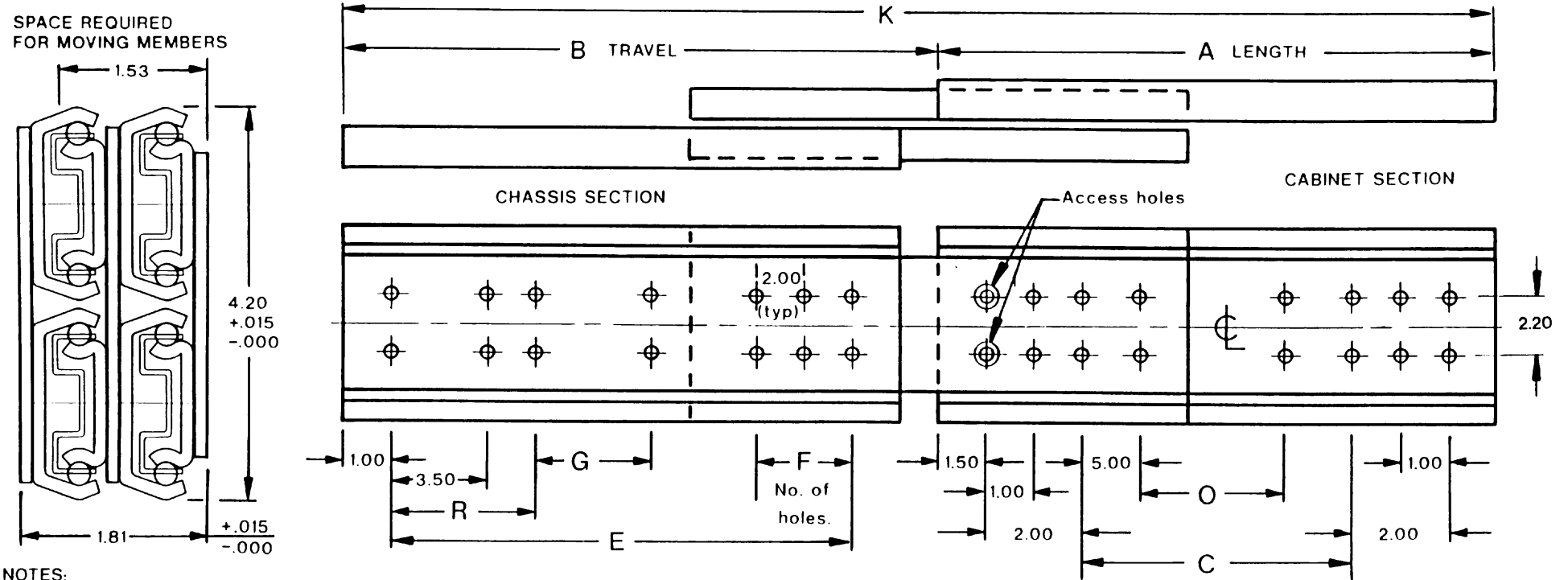


"SLIM TRACK" 3-SECTION BALL-BEARING SLIDE MODEL: HD3B2



NOTES:

MATERIAL: PRIME WORK HARDENED STEEL.
 FINISH: BRIGHT ELECTRO-ZINC PLATED PER QQZ-325, TYPE 1, SILVER COLOR
 MOUNTING HOLES .265 DIA. ALL SLOTS .265 x .375.
 MOUNTING HOLE AND SLOT LOCATION TOLERANCE ±.005.
 LOAD CAPACITY TO 2,300 * LBS.
 *LOAD RATINGS ARE BASED ON A PAIR OF 18" SLIDES WITH STANDARD EXTENSION.
 Choice of positive locking in both directions in extended position or stop-out only which enables easy entry of chassis into cabinet without manipulation of catches.
 Any choice of combinations of lengths, engagements, mounting hole patterns, etc., available as a Barnes Engineering Co. service at a nominal cost, or, in many cases at no additional cost.
 Any load requirement available by stacking vertically and/or horizontally.
 Additional tooling holes at Barnes Engineering option.
 Front and rear mounting brackets are available.

When ordering, please specify features needed: e.g.
 HD3B2-20-PL (positive locking when extended)
 HD3B2-20-SO (stop-out only) -FD (fast disconnect)
 HD2B2M (Military models)



BARNES ENGINEERING COMPANY
 2715 DELTA PLACE
 COLORADO SPRINGS, CO. 80910
 TELEPHONE (719) 390-6500
 FAX (719) 390-6700
 www.slimtrack.com

SLIDE DIMENSIONS									
MODEL	A	B	C	E	F	G	K	O	R
HD3B2-10	10	11	.	8	1		21		
HD3B2-12	12	13	5	10	1		25		
HD3B2-14	14	15	7	12	1		29		
HD3B2-16	16	17	9	14	1		33		
HD3B2-18	18	19	11	16	2		37		
HD3B2-20	20	21	13	18	2		41	3	5.5
HD3B2-22	22	23	15	20	3		45	5	5.5
HD3B2-24	24	25	17	22	3	*	49	7	5.5
HD3B2-26	26	27	19	24	4	*	53	9	5.5
HD3B2-28	28	29	21	26	4	*	57	11	5.5
HD3B2-30	30	31	23	28	5	*	61	13	5.5

* OPTIONAL HOLE UPON REQUEST