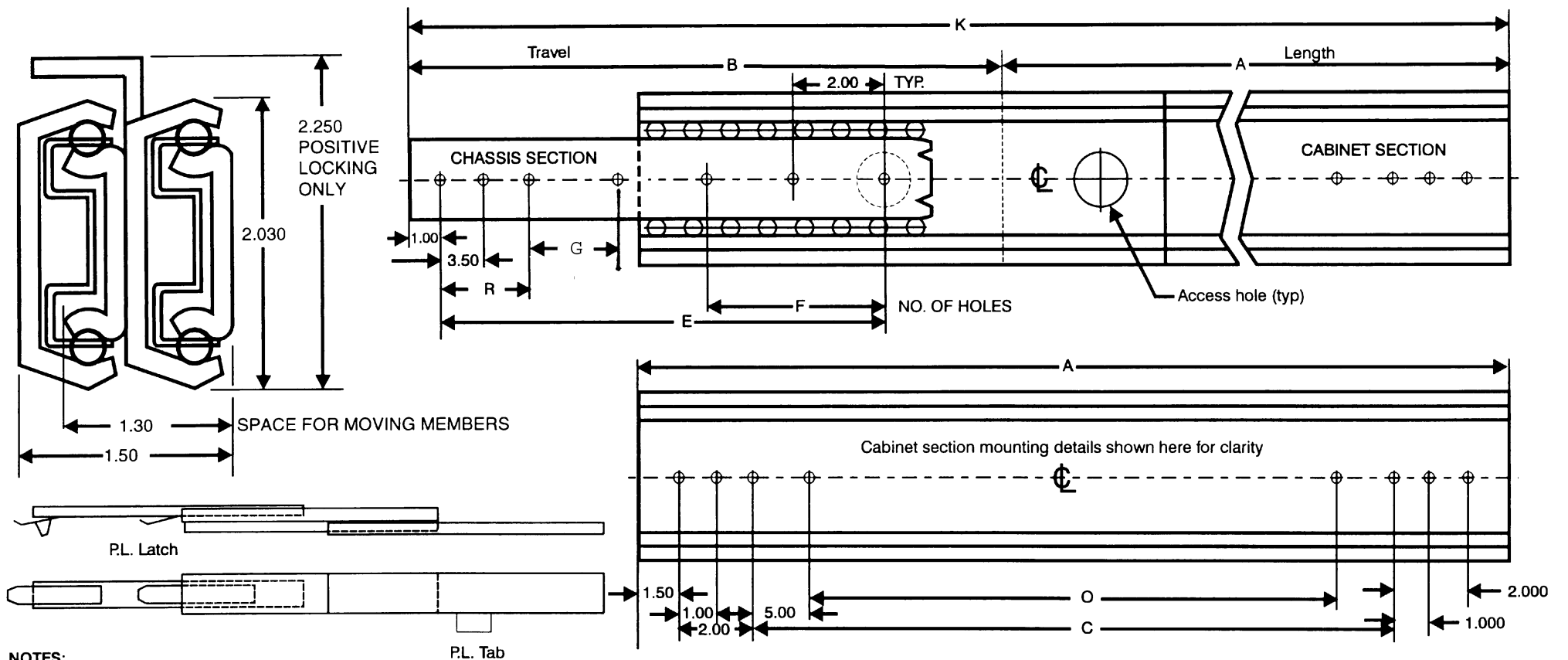


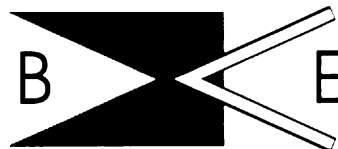
# "SLIM-TRACK" 3-SECTION BALL BEARING SLIDE MODEL: HD3B



**NOTES:**

**MATERIAL:** PRIME WORK HARDENED STEEL.  
**FINISH:** BRIGHT ELECTRO-ZINC PLATED PER QQZ-325, TYPE 1. SILVER COLOR  
 MOUNTING HOLES .265 DIA. ALL SLOTS .265 x .375.  
 MOUNTING HOLE LOCATION TOLERANCE ± .015.  
 LOAD CAPACITY TO 1000 LBS.\*  
 \*LOAD RATINGS ARE BASED ON A PAIR OF 18" SLIDES WITH STANDARD EXTENSION.  
 Choice of positive locking in both directions, in extended position, or stop-out only which enables easy entry of chassis into cabinet without manipulation of catches.  
 Any choice of combinations of lengths, engagements, mounting hole patterns, etc., available at Barnes Engineering Company service at a nominal cost, or, in many cases at no additional cost.  
 Any load requirement available by stacking vertically and/or horizontally. Additional holes available at Barnes Engineering Co.'s option.  
 Front and rear mounting brackets are available.

When ordering, please specify features needed: e.g.  
 SO ( Stop Out Only )  
 PL ( Positive Lock When Extended )  
 LI ( Lock In When Closed )  
 FD ( Fast Disconnect )  
 ND ( Non-Disconnect )



**BARNES ENGINEERING COMPANY**  
 2715 DELTA PLACE  
 COLORADO SPRINGS, CO 80910  
 TELEPHONE: (719) 390-6500  
 FAX: (719) 390-6700  
 TOLL FREE: (800) 995-6050  
 www.slimtrack.com

SLIDE DIMENSIONS									
MODEL	A	B	C	E	F	G	K	O	R
HD3B-10	10	11	3	8	1		21		
HD3B-12	12	13	5	10	1		25		
HD3B-14	14	15	7	12	1		29		
HD3B-16	16	17	9	14	1		33		
HD3B-18	18	19	11	16	2		37		
HD3B-20	20	21	13	18	2		41	3	5.5
HD3B-22	22	23	15	20	3		45	5	5.5
HD3B-24	24	25	17	22	3		49	7	5.5
HD3B-26	26	27	19	24	4	*	53	9	5.5
HD3B-28	28	29	21	26	4	*	57	11	5.5
HD3B-30	30	31	23	28	5	*	61	13	5.5

\*OPTIONAL HOLE UPON REQUEST