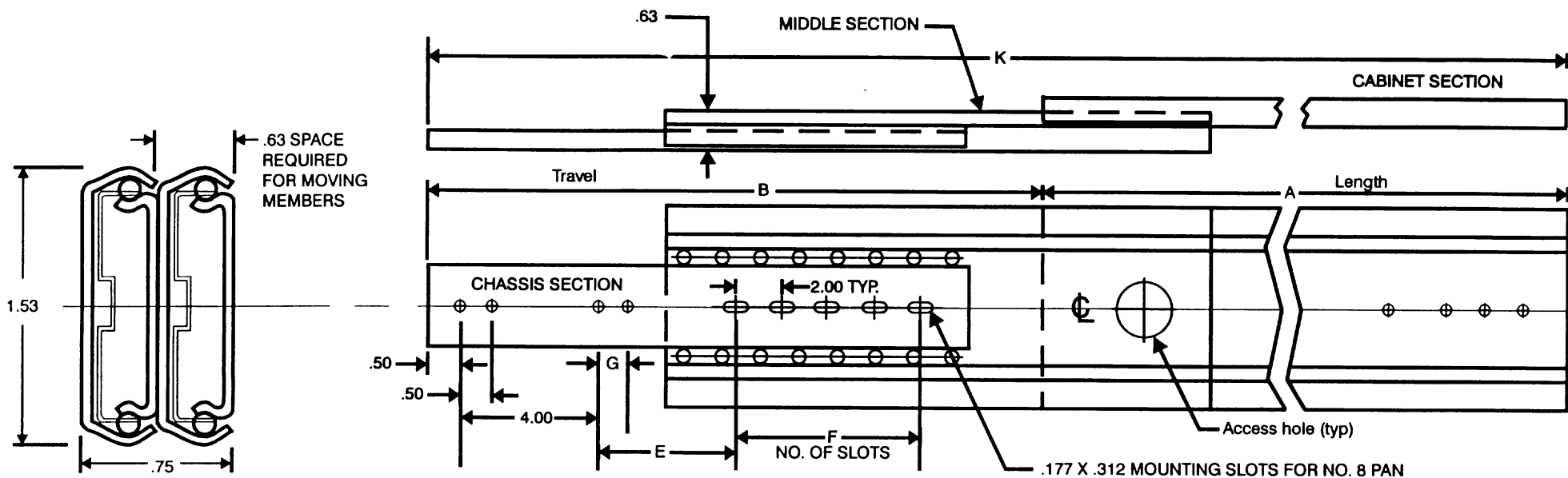
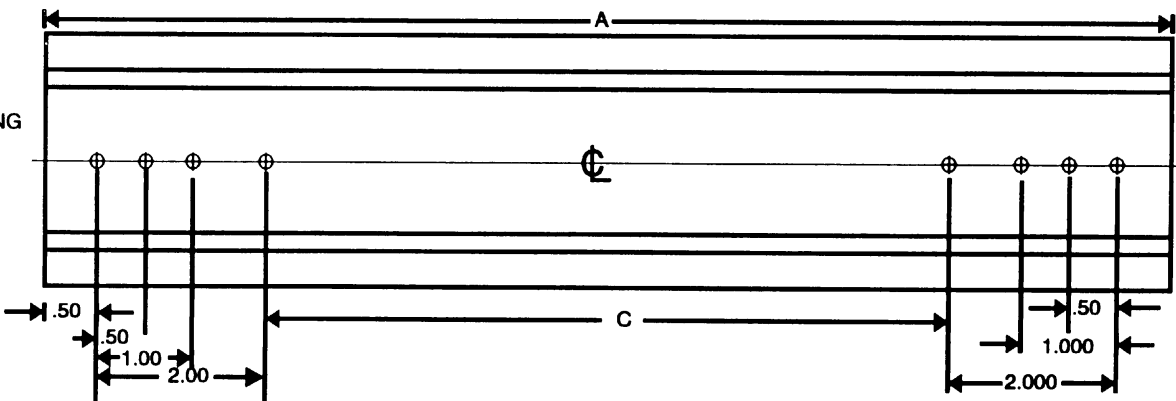


# "SLIM-TRACK" 3-SECTION BALL BEARING SLIDE MODEL: FBB



OUTER (CABINET SECTION) MOUNTING DETAILS SHOWN HERE FOR CLARITY



**NOTES:**

**MATERIAL:** PRIME WORK HARDENED STEEL.  
**FINISH:** BRIGHT ELECTRO-ZINC PLATED PER QQZ-325, TYPE 1. SILVER COLOR.  
 FRONT AND REAR MOUNTING BRACKETS ARE AVAILABLE.  
 ALL MOUNTING HOLES .177 DIA. FOR NO. 8 PAN OR BINDING HEAD SCREWS.  
 MOUNTING HOLE AND SLOT LOCATION TOLERANCE ±.015.  
 LOAD CAPACITY TO 150 LBS.\*

\*Load ratings are based on a pair of 18" slides with standard extension.

Any choice of combinations of lengths, engagements, mounting hole patterns, etc., available as a Barnes Engineering Company service at a nominal cost, or, in many cases at no additional cost.  
 Any load requirement available by stacking vertically and/or horizontally.

When ordering, please specify features needed: e.g.  
 FBB-20-PL (POSITIVE LOCKING WHEN EXTENDED).  
 FBB-20-SO (STOP - OUT ONLY)  
 -FD (FAST DISCONNECT).  
 -LJ (Lock-in)  
 Brackets and hardware available see bracket pages.



BARNES ENGINEERING COMPANY  
 2715 DELTA PLACE  
 COLORADO SPRINGS, 80910  
 800-995-6050 PHONE  
 719-390-6700 FAX  
 www.slimtrack.com

SLIDE DIMENSIONS							
MODEL	A	B	C	E	F	G	K
FBB-10	10	11	5	4.50	1		21
FBB-12	12	13	7	6.50	1		25
FBB-14	14	15	9	6.50	2		29
FBB-16	16	17	11	8.50	2		33
FBB-18	18	19	13	8.50	3		37
FBB-20	20	21	15	10.50	3	2	41
FBB-22	22	23	17	10.50	4	2	45
FBB-24	24	25	19	12.50	4	2	49
FBB-26	26	27	21	12.50	5	2	53
FBB-28	28	29	23	14.50	5	2	57
FBB-30	30	31	25	16.50	5	2	61