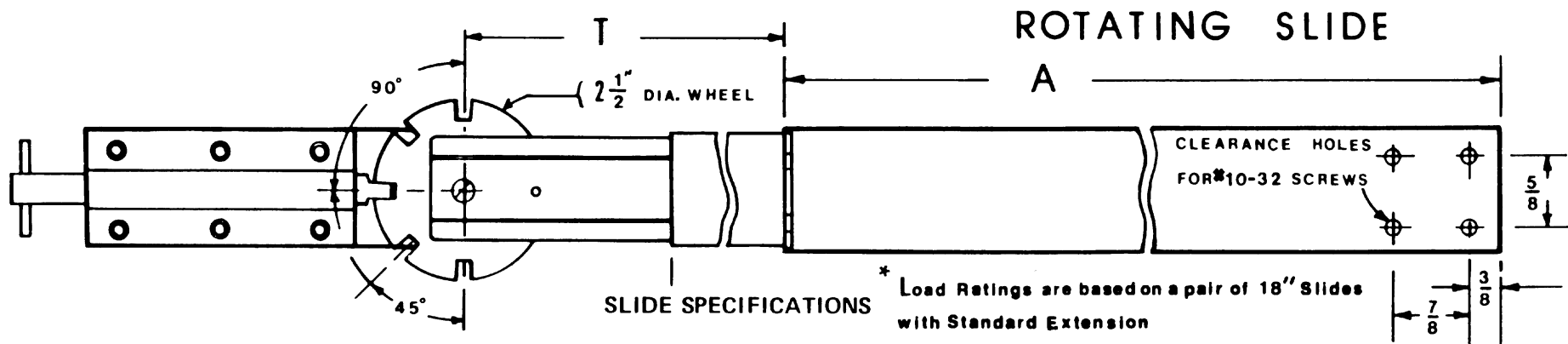


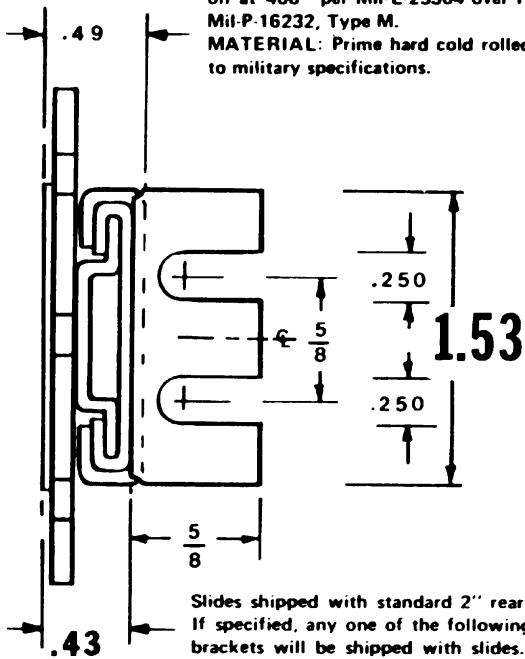
Series **EST-RT** "ROTO-TRACK" Solid Bearing Slide - Light Duty - 3-SECTION



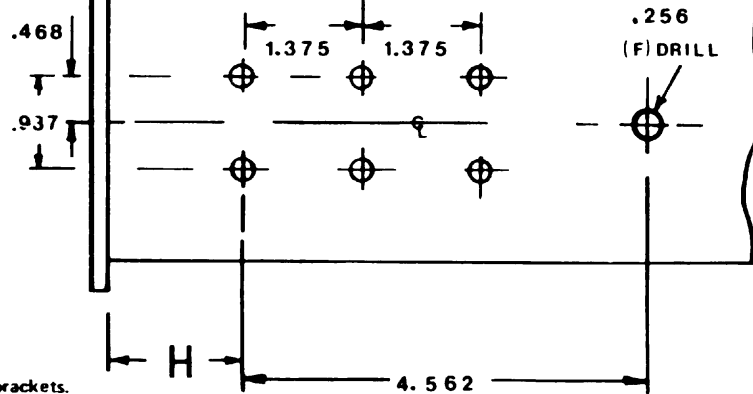
ALL HARDWARE STAINLESS STEEL OR ZINC PLATE
 FINISH: Molybdenum Disulphide. Dry Lubricant, baked on at 400° per Mil-L-25504 over Phosphate Coating per Mil-P-16232, Type M.
 MATERIAL: Prime hard cold rolled steel. All parts built to military specifications.

Choice of Positive Locking in both directions in extended position or Stop-Out only (stops coming out, but can be pushed back into cabinet without releasing any catches), enabling easy entry of chassis into cabinet without manipulation of catches.

When ordering, specify as:
 example: EST-RT-20-PL (Positive Locking when extended) or, EST-RT-20-SO (Stop Out only).



CHASSIS MTG. HOLES — SIX Places
 Clearance for No. 8 Screws



MODEL NO.	A	T	H	
			Min.	Max.
EST-RT-10	10	Check	1.31	
EST-RT-12	12	with factory	1.31	
EST-RT-14	14	9.50	1.31	
EST-RT-16	16	11.50	1.31	
EST-RT-18	18	13.50	1.31	
EST-RT-20	20	15.50	1.31	
EST-RT-22	22	17.50	1.31	
EST-RT-24	24	19.50	1.31	
EST-RT-26	26	21.50	1.31	
EST-RT-28	28	23.50	1.31	
EST-RT-30	30	25.50	1.31	

Any choice of combinations of lengths, engagements, mounting hole patterns, etc., available as a Barnes Engineering Company service at a nominal cost, or, in many cases at no additional cost.

"SLIM-TRACK" SLIDES

BARNES ENGINEERING COMPANY

* NOMINAL LOAD RATING **75** POUNDS
 APRIL, 1975 Series EST-RT