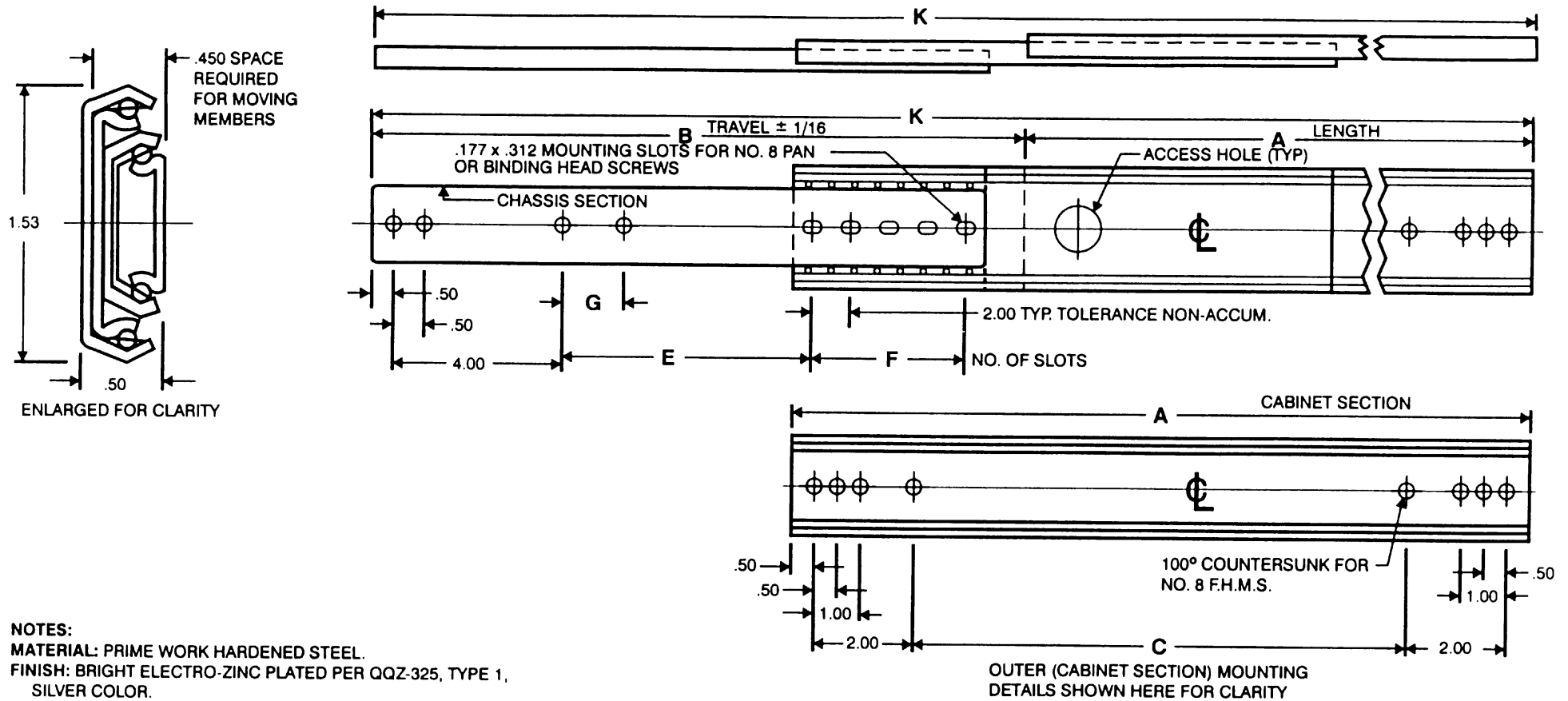


SLIM-TRACK 3 SECTION BALL BEARING SLIDE MODEL:ESBB



NOTES:
MATERIAL: PRIME WORK HARDENED STEEL.
FINISH: BRIGHT ELECTRO-ZINC PLATED PER QQZ-325, TYPE 1, SILVER COLOR.
 FRONT AND REAR MOUNTING BRACKETS ARE AVAILABLE.
 ALL MOUNTING HOLES .177 DIA. FOR NO. 8 PAN OR BINDING HEAD SCREWS.
 MOUNTING HOLE AND SLOT LOCATION TOLERANCE $\pm .010$.
 ALL SLIDES QUALITY ZINC PLATED: LOAD CAPACITY TO 125* LBS.
 *Load ratings are based on a pair of 18" Slides with standard extension.
 AVAILABLE IN STAINLESS STEEL.

Any choice of combinations of lengths, engagements, mounting hole patterns, etc., available as a Barnes Engineering Company service at a nominal cost, or, in many cases at no additional cost.

CHOICE OF POSITIVE LOCKING IN BOTH DIRECTIONS IN EXTENDED POSITION OR STOP-OUT ONLY WHICH ENABLES EASY ENTRY OF CHASSIS INTO CABINET WITHOUT MANIPULATION OF CATCHES.

WHEN ORDERING, PLEASE SPECIFY

- FEATURE NEEDED:**
 ESBB-20-PL (Positive locking when extended)
 ESBB-20-SO (Stop-out only)
 ESBBM (Military models)
 ESBB-20-FD (Fast disconnect)
 ESBB-20-LI (Lock-in)



BARNES ENGINEERING COMPANY
 2715 DELTA PLACE
 COLORADO SPRINGS, CO 80910
 800-995-6050 PHONE
 719-390-6700 FAX
 www.slimtrack.com

SLIDE DIMENSIONS							
MODEL	A	B	C	E	F	G	K
ESBB-10	10	11	5	4.50	1		21
ESBB-12	12	13	7	6.50	1		25
ESBB-14	14	15	9	6.50	2		29
ESBB-16	16	17	11	8.50	2		33
ESBB-18	18	19	13	8.50	3		37
ESBB-20	20	21	15	10.50	3	2	41
ESBB-22	22	23	17	10.50	4	2	45
ESBB-24	24	25	19	12.50	4	2	49
ESBB-26	26	27	21	12.50	5	2	53
ESBB-28	28	29	23	14.50	5	2	57
ESBB-30	30	31	25	16.50	5	2	61