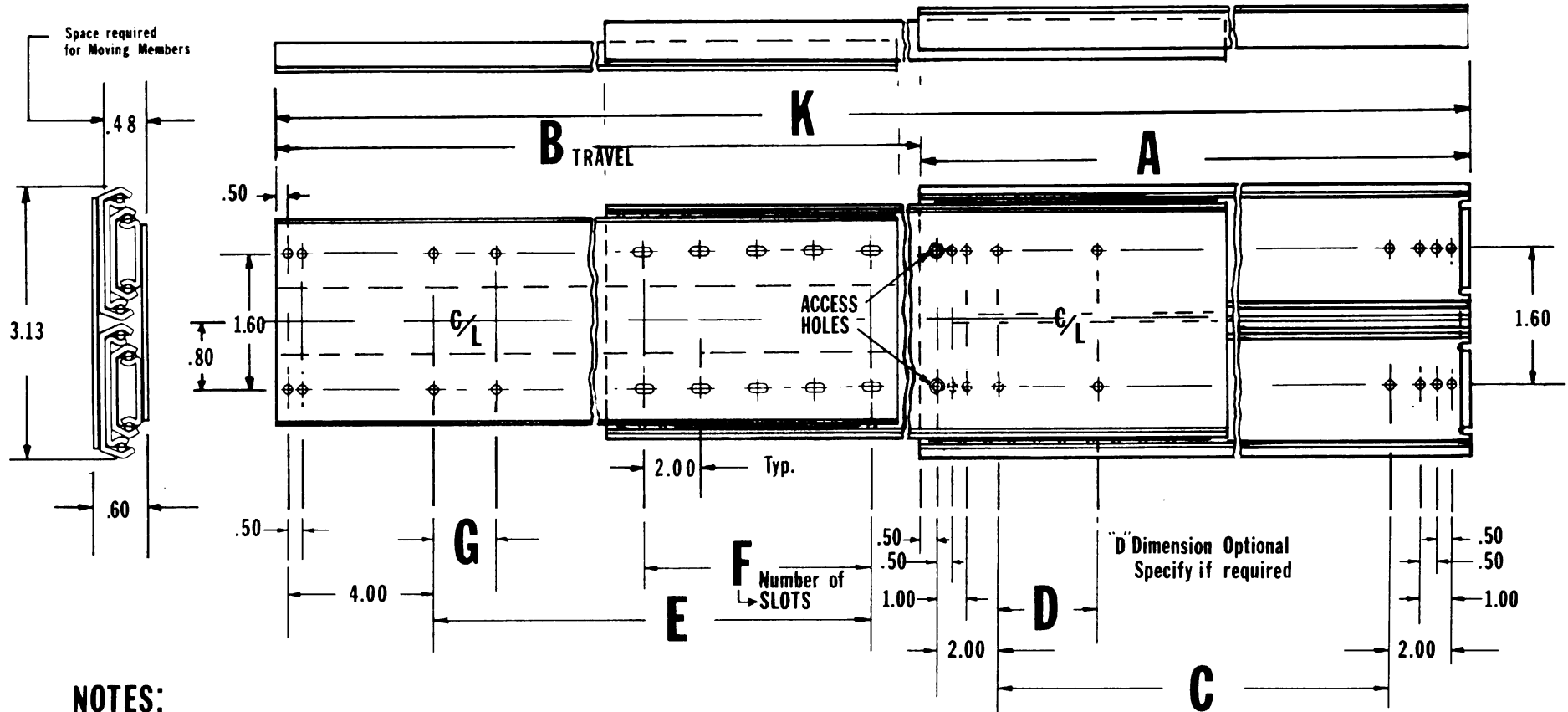


# SLIM-TRACK · 3 Section Ball Bearing Steel Chassis Slides

MODEL: ESBB2



## NOTES:

1. **LOAD CAPACITY:** Up to 300 Pounds. Load Ratings are based on a pair of 18" Slides with Standard Extension.
2. **MATERIAL:** Prime work hardened Steel.
3. **HOLES:** All Holes .177 Dia. for No.8 Pan or Binding - Head Screws.
4. **SLOTS:** .177 x .312 Mounting Slots for No.8 Pan or Binding - Head Screws.
5. **Mounting Hole and Slot Location Tolerance**  $\pm .010$
6. Any choice of combinations of lengths, engagements, mounting-hole patterns, etc., available as a Barnes Engineering Company service at a nominal cost, or, in many cases at no additional cost.
7. **FINISH:** Bright Electro-Zinc Plated per QQZ-325, Type 1, - Silver Color.
8. **BRACKETS:** Front and Rear Mounting Brackets available.
9. **MILITARY Models available:** Specify as: ESBB2M
10. **When Ordering, Specify as:** example: ESBB2-20-PL (Positive Locking when extended) and ESBB2-20-SO (Stop Out Only)
11. **FAST DISCONNECT:** Specify as: -FD
12. Any Load requirement available by Multiple Stacking Vertically, - and/or Horizontally.

SLIDE DIMENSIONS

MODEL NO.	A	B	C	D	E	F	G	K
ESBB2-10	10	11	5		4.50	1		21
ESBB2-12	12	13	7	1	6.50	1		25
ESBB2-14	14	15	9	1	8.50	2		29
ESBB2-16	16	17	11	3	10.50	2		33
ESBB2-18	18	19	13	3	12.50	3		37
ESBB2-20	20	21	15	5	14.50	3	2	41
ESBB2-22	22	23	17	5	16.50	4	2	45
ESBB2-24	24	25	19	7	18.50	4	2	49
ESBB2-26	26	27	21	7	20.50	5	2	53
ESBB2-28	28	29	23	9	22.50	5	2	57
ESBB2-30	30	31	25	9	24.50	5	2	61

Choice of Positive Locking in both directions in extended position or Stop-Out Only (Stops wing OUT but Can be pushed back into cabinet without releasing any Catches), enabling easy entry of Chassis into Cabinet without manipulation of Catches.

BARNES ENGINEERING COMPANY  
 2715 DELTA PLACE  
 COLORADO SPRINGS, CO 80910  
 800-995-6050 PHONE  
 719-390-6700 FAX  
 www.slimtrack.com