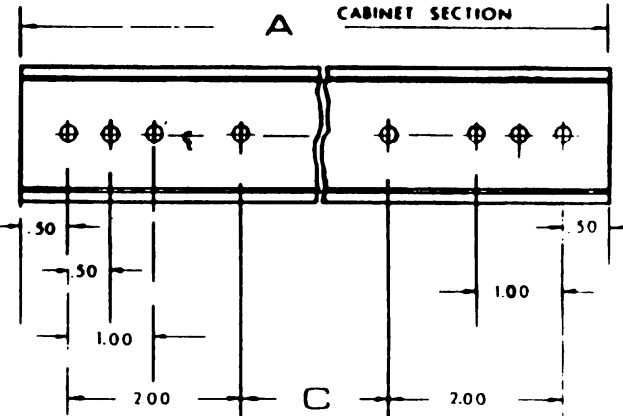
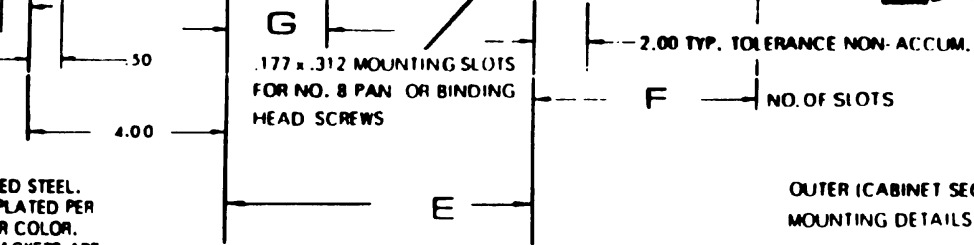
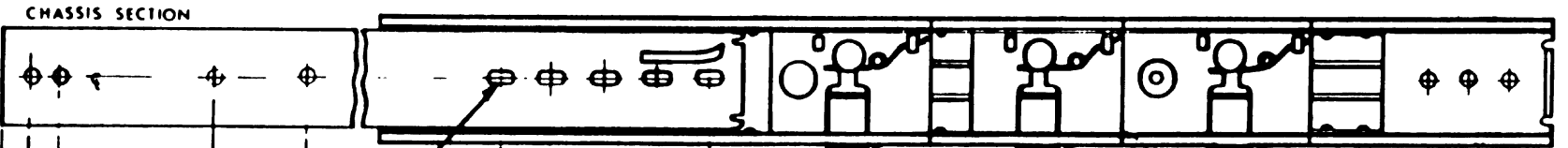
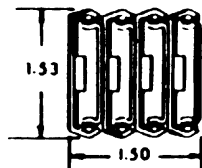
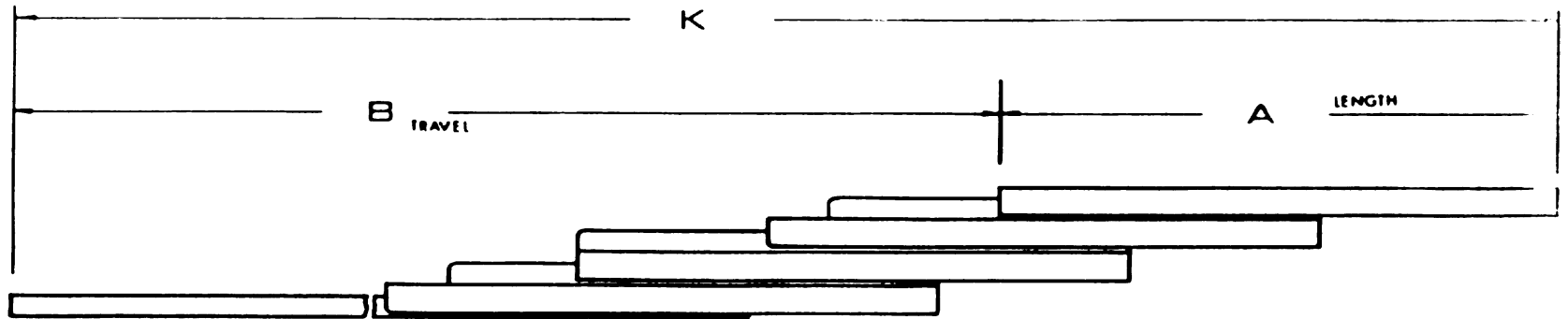


**MODEL:  
D T**



**NOTES:**  
 MATERIAL: PRIME WORK HARDENED STEEL.  
 FINISH: BRIGHT ELECTRO-ZINC PLATED PER QQZ-325, TYPE 1, SILVER COLOR.  
 FRONT AND REAR MOUNTING BRACKETS ARE AVAILABLE.  
 ALL MOUNTING HOLES .177 DIA. FOR NO. 8 PAN OR BINDING HEAD SCREWS  
 MOUNTING HOLE AND SLOT LOCATION TOLERANCE  $\pm .010$   
 ALL SLIDES QUALITY ZINC PLATED  
 LOAD CAPACITY TO 75 LBS. AND UP \*  
 ANY LOAD REQUIREMENT AVAILABLE BY STACKING VERTICALLY AND/OR HORIZONTALLY.  
 \* Load ratings are based on a pair of 18" Slides with standard extension.

# SLIM TRACK 5-SECTION BALL BEARING SLIDES

CHOICE OF POSITIVE LOCKING IN BOTH DIRECTIONS IN EXTENDED POSITION OR STOP-OUT ONLY WHICH ENABLES EASY ENTRY OF CHASSIS INTO CABINET WITHOUT MANIPULATION OF CATCHES.

WHEN ORDERING, PLEASE SPECIFY FEATURE NEEDED:  
 DT 20 PL (POSITIVE LOCKING WHEN EXTENDED)  
 DT 20 SO (STOP-OUT ONLY)  
 DT M (ALTERNATE MODELS)  
 FD (FAST DISCONNECT)

Any choice of combinations of lengths, engagements, mounting hole patterns, etc., available as a Barnes Engineering Company service at a nominal cost, or in many cases at no additional cost.

SLIDE DIMENSIONS							
MODEL	A	B	C	E	F	G	K
DT-10	10	20	5	4.50	1		30
DT-12	12	24	7	6.50	1		36
DT-14	14	28	9	6.50	2		42
DT-16	16	32	11	8.50	2		48
DT-18	18	36	13	8.50	3		54
DT-20	20	40	15	10.50	3	2	60
DT-22	22	44	17	10.50	4	2	66
DT-24	24	48	19	12.50	4	2	72
DT-26	26	52	21	12.50	5	2	78
DT-28	28	56	23	14.50	5	2	84
DT-30	30	60	25	16.50	5	2	90

PAGE 31



**BARNES ENGINEERING COMPANY**  
 2715 Delta Place  
 COLORADO SPRINGS, CO 80910

SEPTEMBER 1981